

# Sound Card Installation for Windows 95/98

## Hardware Installation

1. Shut down Windows and power down system. Unplug power cable from the system.
2. Remove screws and open system enclosure.
3. Remove static electricity by touching the metal power supply case before touching any cards.

*Note: Static electricity can damage electric components. Always handle cards by the edges and avoid touching contacts or internal components.*

4. If there is a sound card currently installed in the system, locate it and determine if it is a card in an expansion slot or a sound card built into the motherboard. If it is built into the motherboard it needs to be disabled (check with the manufacturer or the documentation for details). If it is a card plugged into an expansion slot, remove the screw that retains the card in place and carefully pull the card out of the system. If an audio cable is attached to the card, carefully disconnect it.
5. Determine which type of card you are installing, ISA, PCI or AMR. Verify that there is an available slot of the correct type in the system (see figure1, below) and remove the screw attached to the slot cover for that slot and remove the slot cover.



6. Press new card firmly into the slot until it is seated completely.
7. Tighten the screw that retains the bracket to the enclosure.
8. If there are any open expansion slot holes, install the slot covers and screws to close each of them.
9. Attach the CD audio cable from the CD-ROM to the sound card's CD audio input connector.
10. Close system enclosure and replace screws.
11. Firmly plug in the speakers to the speaker/line out jack.
12. Reattach power cable to the system.
13. Power up the system and boot into Windows.

The next step is the software installation on the following pages.

# Software Installation

Installation steps will vary depending on which operating system you are using on your system. Because of this it is necessary to have separate instructions for Windows 98 and Windows 95 operating systems. Please find the appropriate instructions for your system below:

## Windows 98 installation

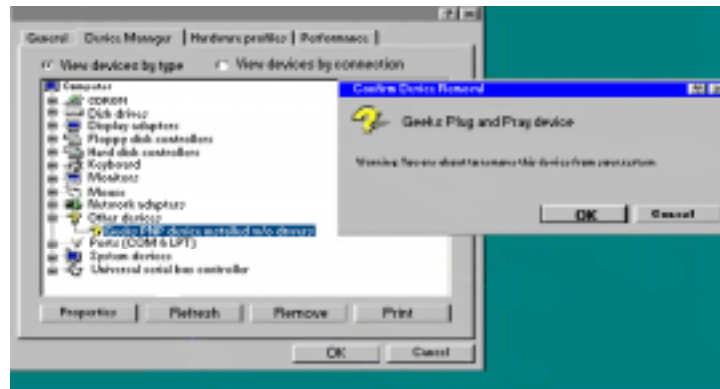
If you are NOT prompted for a driver as windows loads:

**Go to Step 1**

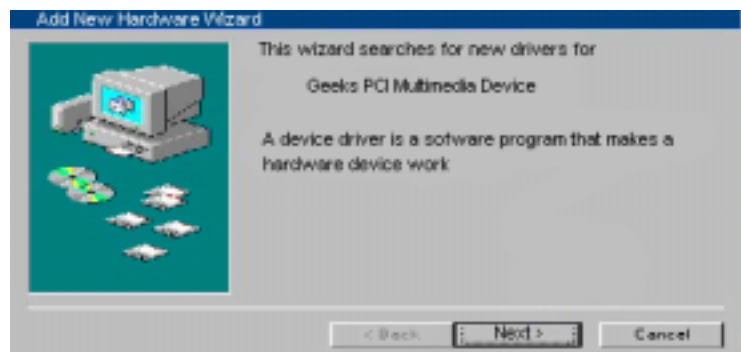
If you ARE prompted for a driver as windows loads:

**Skip to Step 2**

1. Click Start > Settings > Control Panel. Double click on the "System" icon and click the tab marked "Device Manager"(see figure below). Select any child device under the "Other devices" icon by clicking on them. Then click the "Remove" button below and click "OK" when the confirmation appears. Repeat this for each child device until the "Other devices" category is no longer listed among the devices. Click the "Refresh" button and proceed to step 2.



2. The first time the system boots up after physically installing the sound card, the Add **New Hardware Wizard** appears. The Wizard displays the text: **This wizard searches for new drivers for your product.** Click **Next**.



3. You are prompted with two options for finding the drivers. Select **Search for the best driver** for your device. Click **Next**.



4. You are offered several search options. Select the **Specify a location** check box.



5. Insert the driver disk into your CD-ROM or floppy drive and set the path in the **Specify a location window** to **X:\** (Where X is the letter that corresponds to the appropriate drive). Then click **Browse** and navigate to the driver located on the disk. Then click the "OK" button.



6. Confirm that the driver location is correct in the "Specify a location" box and click the "Next" button.



7. Windows will confirm that it has located the drivers for the item you are installing. Click **Next**.

*Note: If the drivers could not be located, click **Back** and verify that the correct path to the appropriate driver has been entered.*

8. Windows 98 will now copy the driver files to your hard drive and inform you when the task has completed.
9. Click **Finish** and reboot your computer, if prompted.

Additional drivers may now be installed. Please wait until Windows 98 finishes loading all drivers-which may take an extra minute or two.

## **Windows 95 installation**

There are several versions of the Windows 95 operating system. Verify your version of Windows 95 by clicking Start > Settings > Control Panel. After the Control Panel directory opens, double-click System. The designations 4.00.950 B or 4.00.950 C indicate you are using one of the OEM Service Releases of Windows 95. Be sure to follow the instructions below for the appropriate operating system you are using.

Notes: You may need your original Windows 95 CD to complete this installation. Windows may request the original Windows CD to update or install some necessary files. Remove the Driver CD and insert the Windows CD into the CD-ROM drive. Once Windows has installed the necessary components, the installation requests the driver installation CD. Remove the Windows CD and reinsert the driver installation CD. If you are using one of the OEM Service Releases, skip to the second section, Windows 95 (versions OSR2.X).

## **Windows 95 (version 4.00.950)**

After your system boots, it will inform you that it has found a new device and prompts you with selections:

1. Select the option **Driver from disk provided by hardware manufacturer** from the "New Hardware Found" dialog. Click **OK**.
2. Insert the Driver disk into your CD-ROM or floppy drive. In the space **Copy manufacturers files from**, type **x:\** (Where X is the letter that corresponds to the appropriate drive). Then click **Browse** and navigate to the driver.
3. Windows 95 now copies the driver files to your hard drive. Click **OK**.
4. You may be requested to reboot your computer. If so, please restart your computer now.

## **Windows 95 (versions OSR2.X)**

This section provides driver installation procedures for the OSR2 releases (version 4.00.950 B or 4.00.950 C) of Windows 95.

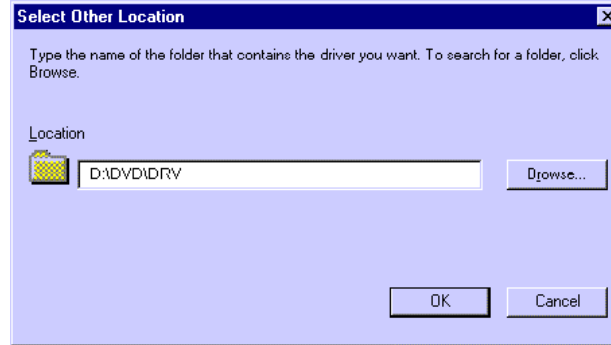
1. After your system boots, it will inform you that it has found a new Device and display the Update Device Driver Wizard. Click **Next**.



2. Windows now searches for the location of the driver files. Wait a few moments until you see the **Other Locations** button. Click **Other Locations**.



3. Insert the Driver Disk into your CD-ROM or floppy drive and click **Browse** and navigate to the driver.



4. Click **OK**, and then click **Finish**. The driver files will be copied to their destination directories.



You may be asked to reboot your computer. If so, please restart your computer.